



Overview

This Quick Start Guide is designed to give you the basics for getting your modusMail server installed and running. For more detailed instructions and descriptions of the features, please see the Administration Guide.

System Requirements

The following are the recommended minimum system requirements:

- 2.13 GHz Intel® Pentium® IV processor
- 40 GB (or higher), 7200 RPM hard drive (mirrored is recommended)
- 1024 MB RAM
- Microsoft® Windows Server 2003 or Server 2008 with the most recent Service Pack
 - Windows 2003 Web Edition is not supported for the Mail Component
- The system requires IIS 6.0 and .NET 3.5 SP1 prior to installing the modus package
- 1024x768 screen resolution
- DNS servers accessible through the network
- Microsoft SQL Server accessible through the network

Server Configuration Requirements

Before installing modusMail, ensure that the following settings are properly configured to prevent installation and operational problems:

- You must be logged into your server as Administrator
- The server must be configured with a static IP and at least 1 DNS server address
 - Go to **Local Area Connection** settings > **Properties** > **Internet Protocol (TCP/IP)** > **Properties**
- Internet Information Services (IIS) Manager 6.0 or above is already installed
- .NET Framework 3.5, SP1 is installed
- Microsoft's built-in SMTP service is either disabled or set to manual (to prevent a conflict on port 25)
 - Go to **Administrative Tools** > **Services**, look for *Simplified Mail Transport Services*
- Verify that the following ports are open to allow for automatic spam, virus and license key updates and Web component access:
 - Port 80 for HTTP
 - Port 443 for HTTPS
 - Ports 31804, 31805 and 31806 (for the Web components)

Firewall Configuration

If you plan to use a firewall, Vircom recommends that you do not use Windows® Firewall as it can cause problems with internal communications required by modus. Instead, use a hardware firewall to protect your network from unauthorized external access.

Database Requirements

modusMail requires databases for several of its features. If you do not have a database server installed, the installation process includes Microsoft SQL Server Express with advanced services. Note that Full Text Indexing is required for the Greylisting feature.

Installing modusMail

Double-click the .exe file to launch the installation. After entering and validating your license key, you will be asked to choose which components to install. Select one of the Deployment Strategies outlined below:

Deployment Strategy 1

This is the default option that installs all components on a single server.

Mail Component: Server and Administration Console

- Installs the basic modusMail program and the configuration console

Web Component

- Installs the WebMail, WebAdmin, WebMonitor and WebPolicy* programs (*license permitting)

Deployment Strategy 2

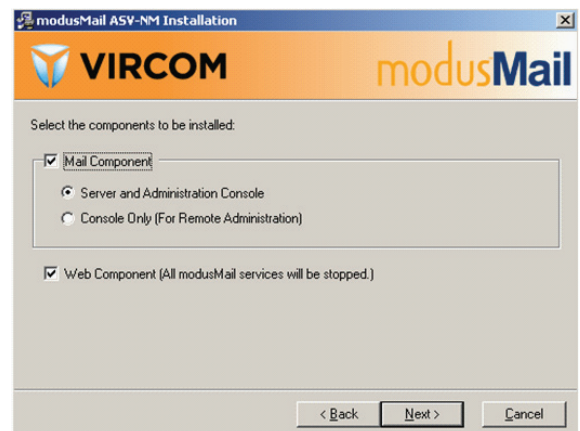
This alternate configuration involves installing the components separately on 2 servers:

Mail Component on Server 1

- Install the **Server and Administration Console** only

Web Components on Server 2

- Copy the .exe file to Server 2 and launch the installer
- Enter the same license key used to install the Mail Component on Server 1: the keys must match
 - Note that all Web components will be installed together
 - See the **Web Components** section (page 4) for manual changes required to the web configuration files



Installation Details

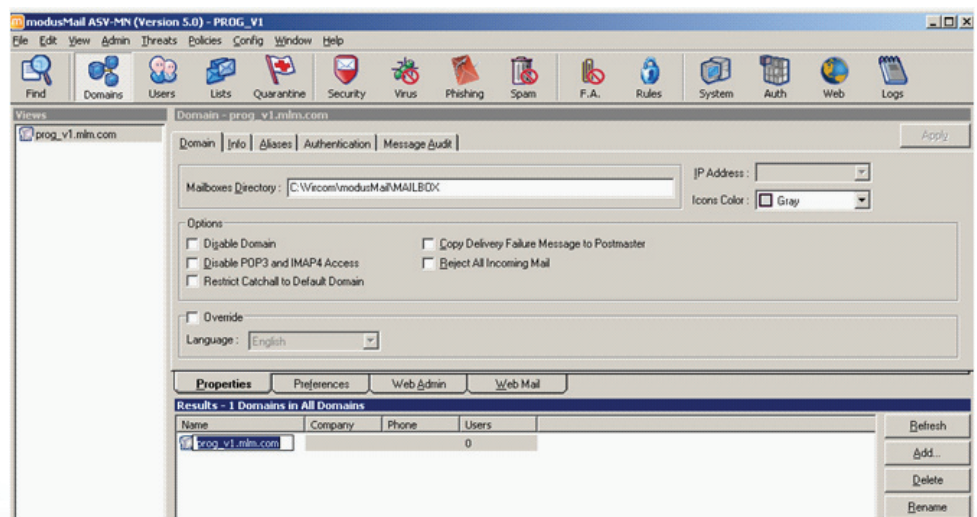
- **Install paths:**
 - The default installation path for the **Mail Component** is **C:\Program Files\Vircom\modusMail**
 - The default installation path for the **Web Components** is **C:\Program Files\Vircom\Web**
 - You may specify your own paths, if required
- **IIS configuration:** Automatic configuration creates all modus web programs as virtual directories within the **Default Web Site** in IIS
 - Optionally select manual configuration and create sites for each of the web programs after the install completes.
- **SQL Server configuration:** Select to use either an existing SQL Server on the network or to install SQL Server Express
 - *Use existing SQL Server:* the following screen will prompt you for the SQL server connection information and login credentials. You must **Verify** the information to ensure that a connection can be established between modusMail and SQL.
 - *Install SQL Server Express with Advanced Services:* this will initiate the download and installation process. Ensure that **Full Text Indexing** is enabled during the setup. You may be prompted to reboot after the install before the modus installation can continue.
 - > Note that you will need to create an administrator account and password on the SQL Server to proceed with the following steps in the modus installation.
- **Database configuration:** Select the database where modus will store its data and **Verify** the connection.

Post-Install Configuration

Adding Domains

The install process automatically creates a default domain using the machine's host name and domain name. Rename it to remove the host and show the actual domain name to be used in email addresses:

- Open the Administration Console and click on the **Domains** tab
- Select the domain name in the lower (results) panel, click **Rename**, dismiss the pop-up, and edit the name
- Click **Add** to enter any additional domain names

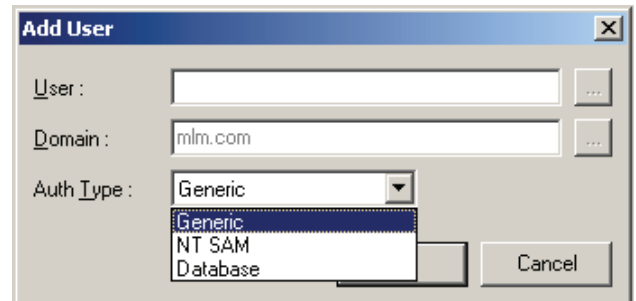


Adding Users

How users are created will depend on your authentication source. The available options are **Generic**, **NT SAM** or **Database**.

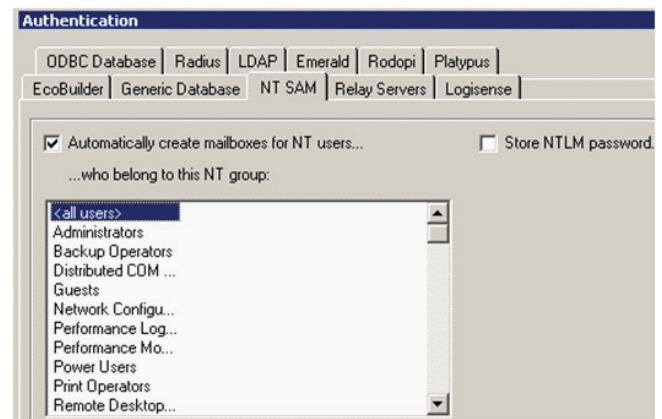
Generic

- The default option, user information is stored in the local registry
- Generic users must be created manually:
 - Click on the **Users** tab
 - Click the **Add** button in the lower (results) panel
 - Enter the username, select the domain name and select **Generic** as the *Auth Type*



NT SAM

- Uses Windows authentication
- To configure, click on the **Auth** tab in the console
 - Enable *Automatically create mailboxes for NT users* and select the appropriate group name
- The Users tab will populate automatically when users receive or send their first message



Database

- **Step 1:** Create an ODBC connection to the billing package/database source to be used for authentication
 - Go to **Administrative Tools > Data Sources (ODBC)**
 - Click on the **System DSN** tab and select a database name or click **Add** to create a new one
 - Enter a **Data Source Name** and take note of it (it must also be entered in the modus Console)
 - Enter the connection information and test the connection
- **Step 2:** Click on the **Auth** tab in the modus Console
 - Select the appropriate billing package/database type tab
 - Enter the *Data Source Name*, *Username* and *Password* entered in the ODBC connection
- The Users tab will populate automatically when users receive or send their first message

Web Components

If the Web Components were installed on a separate server from modusMail (Deployment Strategy 2), the web configuration files must be modified to ensure proper communication between the 2 servers.

Quarantine: Open Windows Explorer to the `...Vircom\Web\WebMail` directory. Locate the `WebMailSvr.ini` file and open it with Notepad:

- Locate the `host=xxx.xxx.xxx.xxx` and verify that it shows the IP address of the local (Web) server
- Locate the `POP3Server`, `IMAPServer` and `SmtplibServer=xxx.xxx.xxx.xxx` addresses and change them all to the IP of the modusMail server
- *Locate `DomainName=machine_name.mydomain.com`: this must be changed to match the primary domain on the modusMail Console

***Note:** the DomainName field must be changed to match the default or primary domain as it appears in the Console - this applies to both deployment strategies.

WebMonitor: In Windows Explorer, go to the ...\\Vircom\\Web\\WebMonitor directory. Locate the **custom.config** file and open it with Notepad:

- Locate `<add key="Servers" value="localhost"></add>`: replace localhost with the IP address of the modusMail server

WebAdmin: In Windows Explorer, go to the ...\\Vircom\\Web\\WebAdmin\\Root directory. Locate the **web.config** file and open it with Notepad:

- Locate `<add key="Site" value="" />` and enter modusMail's IP address between the empty quotes

Folder Permissions

Modify permissions should be given to the local machine's IUSR, ASPNET and Network Service accounts on the root Web folder (...\\Vircom\\Web), and replace the permissions on all child objects. This applies for both deployment strategies.



Restart the WEBMAILSVR and IIS services after making the above changes.

All web programs can be accessed using the following URL: `http:\\localhost\\[app name]`, e.g. `http:\\localhost\\quarantine`, or substitute your IP or website name in place of localhost.

Third-Party Anti-Virus Software

If you run an anti-virus program on the server where modusMail is installed, you must exclude these directories from scanning to prevent interrupting mail processes:

- C:\\winnt\\temp (verify your system settings to ensure this is the correct path)
- ...\\modusMail\\spool
- ...\\modusMail\\mailbox\\@Quarantine (modusMail AV, AS and ASV versions only)

Online Help and Support

The Administration Guide is accessible from the Console by clicking on **Help - Contents** or by pressing **F1**.

More detailed information can also be found in Vircom's Knowledge Base: <http://kb.vircom.com/kbase>.

Or contact Support:

- **Email:** support@vircom.com
- **Telephone:** +1 (514) 845-8474